



1



2



3



4



5



6

1. Reebok Pro Court Portable

Heavy duty goal with virtually unbreakable 111cm backboard. Six different height settings from 2.28m to 3.04m. Base weight 102kg when filled with water or 170kgs when filled with sand. **BK-01 £160.00**

2. Reebok Fusion Portable Pro

Reebok Fusion Pro "Glass" look 111cm (3'7") Acrylic Fusion backboard with a high impact polyethylene frame for superior strength. Telescopic height adjustment from 2.28m to 3.04m (7'6" x 10') without the need for tools. Base weight 102kg with water or 170kg when filled with sand. **BK-02 £177.00**

3. Lifetime Pro Court

111cm 'Impact' blow-moulded backboard with solid steel goal. Six different height settings with telescopic pole, extends from 2.28 to 3.04m (7.5 to 10 feet) in seconds without the use of tools. 'Pro-Court' portable base fills with water or sand and moves on its own wheels. 98.4kg when filled with water, 165kg with sand. Suitable for indoor or outdoor play. **BK-03 £159.00**

4. Lifetime Crossover

111cm fan-shaped 'impact' blow-moulded backboard. Double compression sprung 'Slam It' goal for spring back action. With all weather nylon net. 'Quick Adjust' system, adjusts goal height in seconds from 2.28 metres (7.5 feet) up to a maximum of 3.04 metres (10 feet). 'Street Court' portable base which moves on its own wheels. 106 litre (23.3 gallon) base (106kg when filled with water, 177.8kg with sand). **BK-04 £188.00**

5. Reebok RBX X Power Lift

122cm x 76cm (4' x 2'6"). Clear acrylic shatter guard backboard with blow moulded frame pad. Power Lift adjustment from 2.28m to 3.04m (7'6" x 10'). Orange "Slam It" goal. Base weight 132.5kg when filled with water and 222.2kg when filled with sand. **BK-05 £305.00**

6. Lifetime Power Lift

Pro-style, 212cm (48") clear acrylic backboard for superior rebound. Straight stabiliser arms for increased backboard rigidity. Arena style 'slam-it' pro goal with double compression springs. 'Power lift' height adjustment mechanism. Infinite and effortless height adjustment between 2.28m (7'5") and 3.04m (10'). The 'quick court' base must be filled with 227kg of dry sand to prevent tipping. **BK-06 £395.00**

1. Adjustable Height Cantilever *Conforms to BS EN 1270*

* Suitable for all age groups. * 100mm square post, 2mm thick.
* Designed to be concreted directly 91cm in ground, set can be used with sockets also. * Height cantilever extension arm 120cm projections. * Ring bolted directly through to steel arm for extra strength. * Complete with nets. * Adjustable for junior and senior heights.

- a) Complete with Wooden Back Board 122cm x 90cm. Total weight 155kg (Set of 2). **BK-07a £711.90**
b) Complete with Steel Back Board 122cm x 90cm. Total weight 163kg (Set of 2). **BK-07b £834.15**

2. Socketed Type *Conforms to BS EN 1270*

* Traditional heavy duty design. * 100mm square steel single upright regulation height. * 4mm thick, 120cm projection.
* Complete with 91cm socket. * Ring bolted directly through to steel arm for extra strength complete with nets.

- a) Practice Size Board. With wooden board 122cm x 90cm. Total weight 276kg (Set of 2). **BK-08a £1054.50**
b) Regulation Size Board. With wooden board 180cm x 105cm. Total weight 288kg (Set of 2). **BK-08b £1370.00**
c) Spare 91cm socket for 100mm square post. Weight each 26kg. **BK-08c £63.30 each**

3. Goose Neck Goals *Conforms to BS EN 1270*

The original unit used in "Inner City" environments.

* The best outdoor playability Basketball unit. * Unbreakable unit. * White, galvanised, weather resistant, steel, fan shaped backboard 53" x 45" * 18" solid steel ring with net. * Heavy duty zinc coated steel 114mm x 4.5mm post. * One piece 48" (120cm). * Gooseneck extension. * Installation requires 39" cube hole.

BK-09 £675.00

4. Sure Shot Fold 'N' Travel Unit

Transportable basketball unit ideal for use in primary schools, where an easy to manage unit is required. Also suitable for senior schools use. Folds away easily and stores economically. Ideal for mobile coaching.

* Durable polypropylene (505) 44" x 28" (100 x 70cm) fan backboard. * 18" (45cm) powder coated solid steel ring. Compatible with 215 flex ring. * White nylon net. * 3 leg pole construction powder coated in Black. * Adjustable 8' to 10' (2.44m to 3.05m). * Economical storage and fully collapsible.
* Fits into a hatchback car or small storage area. * Approved by England Basketball/BBL and Basketball Scotland. * Must be used with at least 100kg ballast (not provided). Weight 42kg.

BK-10 £245.00

4a. Ballast Box (not illustrated)

* Clip on metal frame. * Sturdy plastic bucket with handles.
* Holds 100k of dry sand or water. * Easily attached/detached.
* Easy storage. **BK-10a £49.95**

5. Sure Shot "U just" Portable

* Ideal for home or secondary school use. * Durable polypropylene (505) backboard measuring 44" x 28" (100 x 70cm). * 18" (45cm) powder coated solid steel ring with net. * Compatible with 215 flex ring. * Heavy duty pole for extra strength and durability made up of 3 links of 90mm diameter. * Ground stake for added stability.
* Can be adjusted to any height up to the official 10' (3.05m).
* Sturdy base which is to be filled with 190kg of dry sand. * Rolls on 2 wheels for easy movement. * Assembly instructions included.
* Size of box: 48" x 32" x 9" (122 x 81 x 23cm). * Approved by England Basketball, BBL and Basketball Scotland Weight (without sand): 40kg. **BK-11 £180.00**

6. Sure Shot Pole Padding

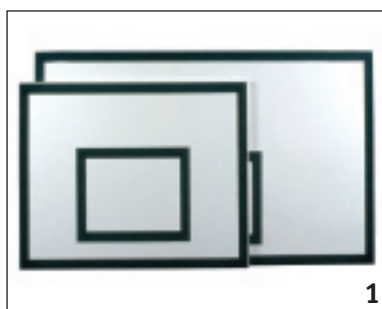
Available in 2 sizes to fit portables and in ground units.

- a) Portable **BK-12a £33.00**
b) Inground **BK-12b £60.00**

7. Sure Shot Little Shot

Indoor/outdoor system for the home, club or primary school. (60 x 44cm) backboard. (34cm) solid steel ring with white nylon net. Steel pole with ballast box base. Adjusts from 1.2 to 1.8m. Use size 5 or size 3 ball. Weight: 16kg. **BK-13 £50.00**





1



2



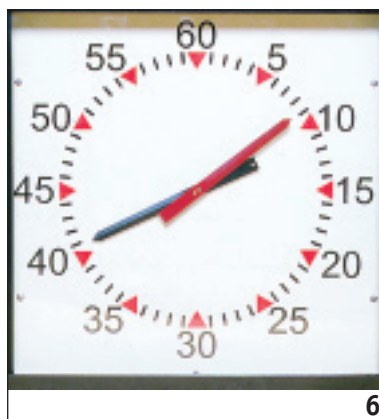
3



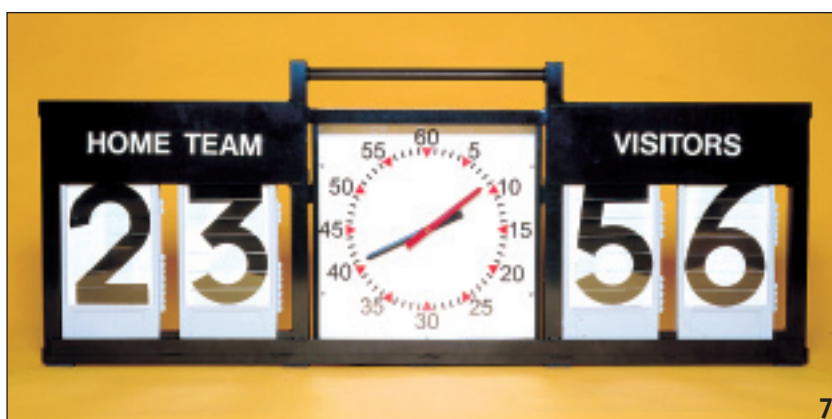
4



5 & 5a



6



7

1. Sure Shot Heavy Duty Backboards

Suitable for use in Sports Hall and Leisure Centres. Laminated wood/fibre glass construction.

a) Practice 47" x 35" (120 x 90cm)

BK-14a £117.00 each

b) Regulation match size 72" x 48" (180 x 120cm). Can be used indoor or outdoor.

Weight 170 - 10kg, 171 - 35kg.

BK-14b £225.00 each

2. Sure Shot Heavy Duty Wall Mount Unit

A heavy duty fixed unit system for use in schools and leisure centres. Rectangular laminated heavy duty (170) backboard 47" x 35" (120 x 90cm). 18" (45cm) solid steel ring with net. Direct mount system bracket powder coated in black. 24" (60cm) extension from wall. Bolts onto any substantial vertical flat surface. Weight 35kg.

BK-15 £257.00

3. Lifetime Backboard & Ring

111cm (44") impact blow moulded polyethylene backboard. Extra heavy duty goal with 32mm double rim end. 16mm steel braces. Net and institutional wall mount bracket included offering 50cm projection. Goal hang weight 205kgs.

BK-16 £210.00

4. Sure Shot Heavy Duty Flex Ring

Top quality flex ring for use in Leisure. 18" (45cm) powder coated solid steel. Enclosed Flex Mechanism. Side Guards for safety. Flex "break" at 70kg.

BK-17 £166.00

5. Sure Shot Institutional Ring and Net

* Ideal for use in schools, colleges and leisure centres.

* 18" (45cm) solid steel ring with net.

* Available with back plate if required.

BK-18 £40.00

5a. "Take Away" plate.

Ideal solution to the problem of controlling use of Outdoor Basketball Units when unattended by taking away the ring! Designed to fasten direct to Backboard. Weight 0.5kg. **BK18-a £12.00**

6. 18" Basketball Clock

* Battery operated with time out facility and hand held controls.

* Complete with base for stand alone use.

BK19 £205.00

7. Basketball Scoreboard Unit

* Sturdy steel frame c/w rubber pad feet.

* Freestanding and ideally suitable for table top location. Incorporates plastic numerals for home and away scores.

* Designed specifically to house 458mm battery operated clock.

* Finished in black polyester powder coating, which is baked on to provide a tough, durable scratch resistant finish. Size 1490 x 585 x 182mm

BK20 £425.00

Does not include clock.

1. Baden Lexum Matchball (indoor) BX471/BX465/BX455

The Baden Lexum basketball is recognised and used as the official match ball by the British Basketball League (BBL), England Basketball, Basketball Scotland and Irish BA for all matches under their jurisdiction. The tan and white concept gives a clearer vision of the ball which is appreciated by players, coaches and spectators alike. The Baden Lexum ball is available in 3 sizes, size 7 official for senior matches, size 6 for women/youth and size 5 for junior.

* Top quality match basketball.

* Tan and White.

a) Size 7 **BK-21a £37.50**

b) Size 6 **BK-21b £37.50**

c) Size 5 **BK-21c £37.50**

2. Baden B321 (indoor/outdoor)

The Baden deluxe synthetic leather, tan and white basketball is recommended by the BBL England Basketball, Basketball Scotland and Irish BA as the quality match ball for school and college matches. It is available in size 7 official.

* School/College quality match ball.

* Tan and White. **BK-22 £29.00**

3. Baden Equalizer (indoor/outdoor)

A synthetic leather basketball, recommended as a high value indoor/outdoor match ball for school and club use.

a) Size 7 **BK-23a £12.15**

b) Size 6 **BK-23b £12.15**

c) Size 5 **BK-23c £12.15**

4. Baden Enforcer (indoor/outdoor)

Top of the range, superior feel rubber ball. Ideal for school and club heavy use.

a) Size 7 **BK-24a £10.20**

b) Size 6 **BK-24b £10.20**

c) Size 5 **BK-24c £10.20**

5. Baden BR600 (indoor/outdoor)

The '600' series balls are high quality rubber balls for use indoors and outdoors.

Recommended for school and club use.

a) Size 7 **BK-25a £7.90**

b) Size 6 **BK-25b £7.90**

c) Size 5 **BK-25c £7.90**

6. Baden BR427 (indoor/outdoor) Rubber Ball

Recommended for all recreational use, suitable for all surfaces

a) Size 7 **BK-26a £7.10**

b) Size 6 **BK-26b £7.10**

c) Size 5 **BK-26c £7.10**

7. Baden BR400 (indoor/outdoor)

A strong, solid value for money basketball, ideal for all recreational use.

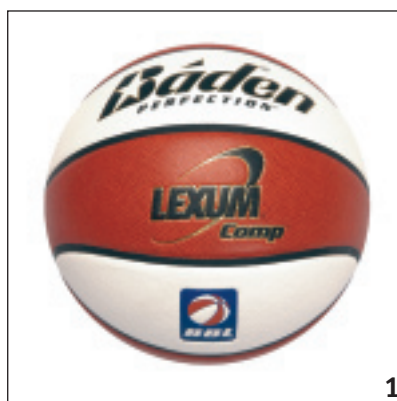
a) Size 7 **BK-27a £5.50**

b) Size 6 **BK-27b £5.50**

c) Size 5 **BK-27c £5.50**

8. Baden Skilcoach Learner Ball

A "hands on" concept ball for teaching basic skills - left and right hand shooting. Size 5 only. **BK-28 £8.90**



1

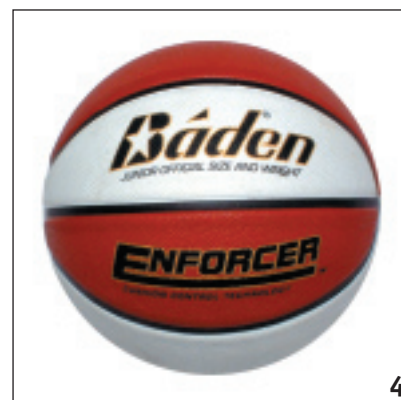
Baden®



2



3



4



5



6



7



8



1



2



3



4



5



6



7



8



9



10

1. Tuftex Synthetic Leather

Tan, pebble finish, suitable for match use.
Size 7. **BK-29 £14.95**

2. Tuftex Nylon Wound

Tan, butyl bladder, ideal practice quality ball.
Size 7. **BK-30 £3.95**

3. Tuftex Nylon Wound Tri-Colour

Durable quality, excellent practice ball, butyl bladder.

a) Size 3 **BK-31a £2.95**

b) Size 5 **BK-31b £3.35**

c) Size 6 **BK-31c £3.55**

d) Size 7 **BK-31d £3.65**

4. Mitre Profile

Moulded rubber basketball, fitted with a low maintenance high air retention butyl bladder.
Size 7. **BK-32 £4.75**

5. Mitre Playoff

Moulded rubber basketball, fitted with a low maintenance high air retention butyl bladder.
Size 7. **BK-33 £4.25**

6. Basketball Coaching Sets

Each kit includes: 1x holdall, 1 x 20 ball carry net, 2 x sets of bibs, 25 x spacemarkers, plus:

a) Senior set - 9 x size 7 and 9 x size 5 basketballs **BK-34a £103.00**

b) Junior set - 9 x size 5 and 9 x size 3 basketballs **BK-34b £95.00**

7. Baden Flipover Scoring Unit

Large 176mm x 75mm numbers 00-99 for team scores. Smaller numbers 1-9 for team fouls. Overall size 24" x 12". Folds down so that it is easily stored away. **BK-35 £41.00**

8. Fog Horn

Non CFC 300ml capacity. **BK-36 £9.50**

9. Nets

Braided nylon (priced per pair).

a) Red, White, Blue, school quality.

BK-37a £3.25

b) White match quality **BK-37b £4.00**

10. Basketball Coaching Folder

Magnetic board and counters supplied with planning pad. **BK-38 £7.50**